

LURE OF THE NORTH

Mitten Sizing Chart

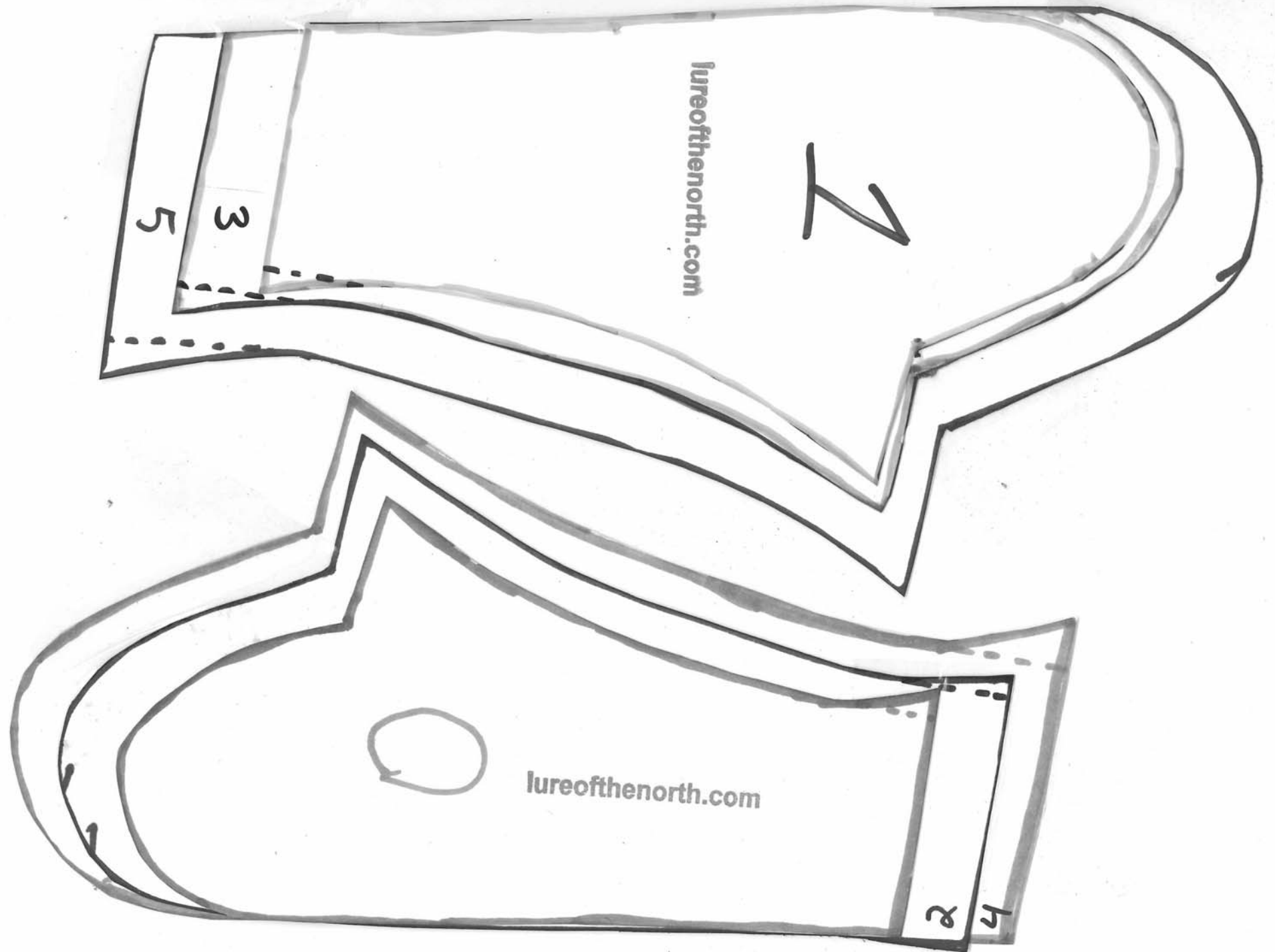
Circumference of Palm	Pattern Size for Inner Mittens	Pattern Size for Outer Mittens
18.00 cm	0	1
19.50 cm	1	2
21.00 cm	2	3
22.50 cm	3	4
24.00 cm	4	5

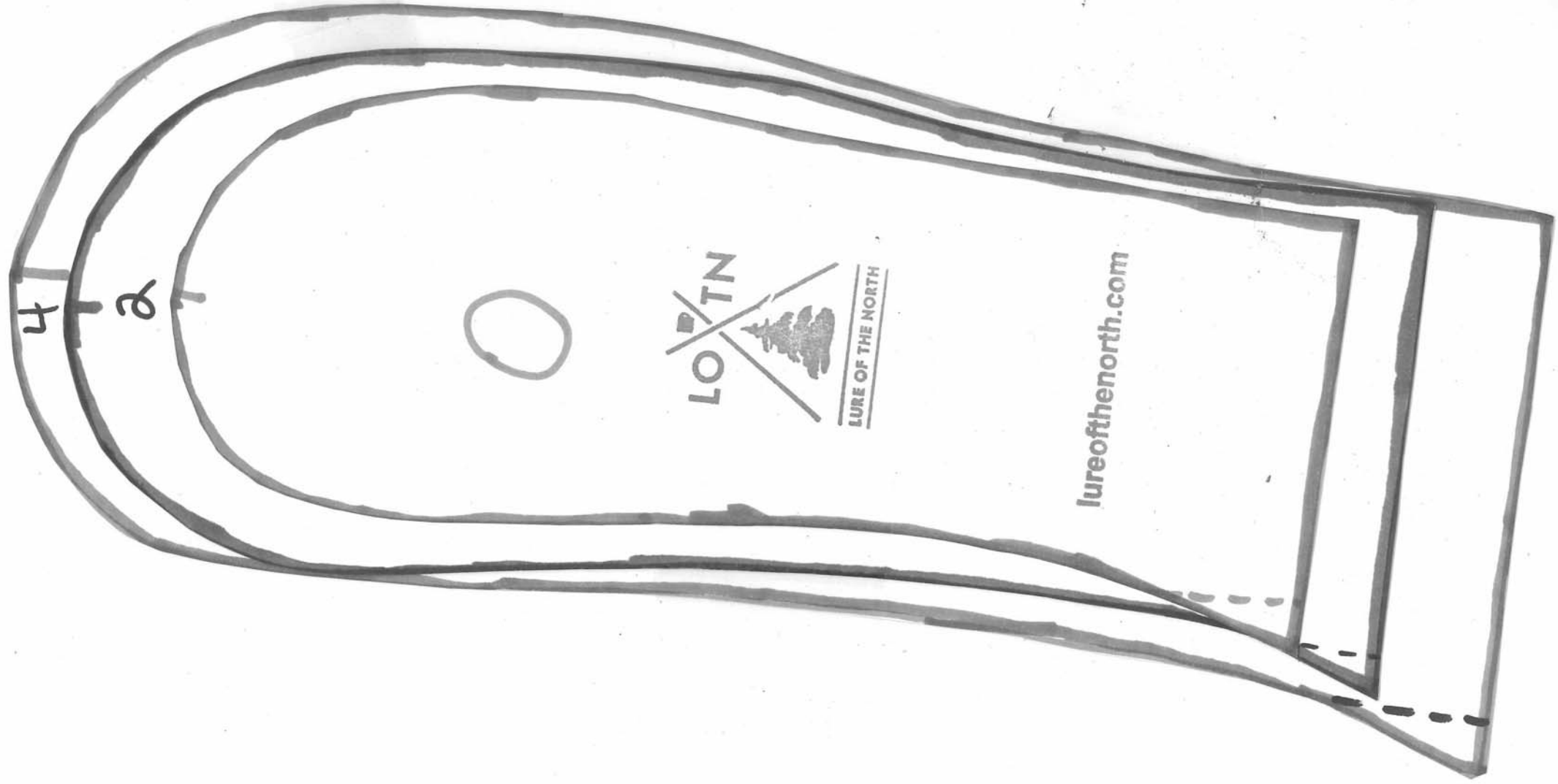
Notes:

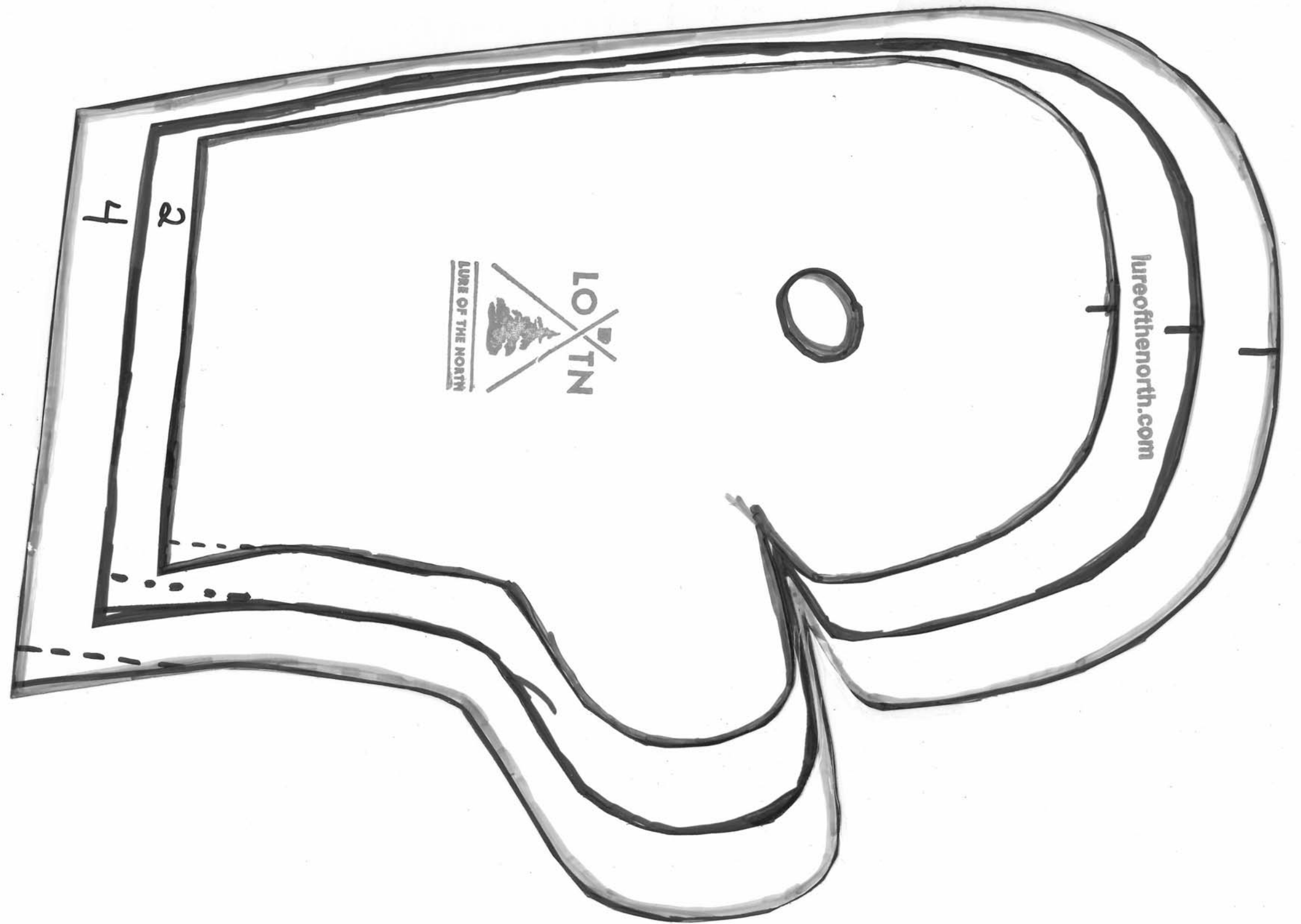
- Full instructions available at <https://lureofthenorth.com/instructional-booklets/>
- This pattern package is designed to be printed on various sizes of paper: letter (this page), legal (thumbs and backs) and ledger (palms). To ensure your patterns print the appropriate size, ensure your printer is set to "actual size" and also set it to "select paper size automatically".
- Ignore the dashed line down by the wrist – a throwback to an earlier era before we used a wrist strap;

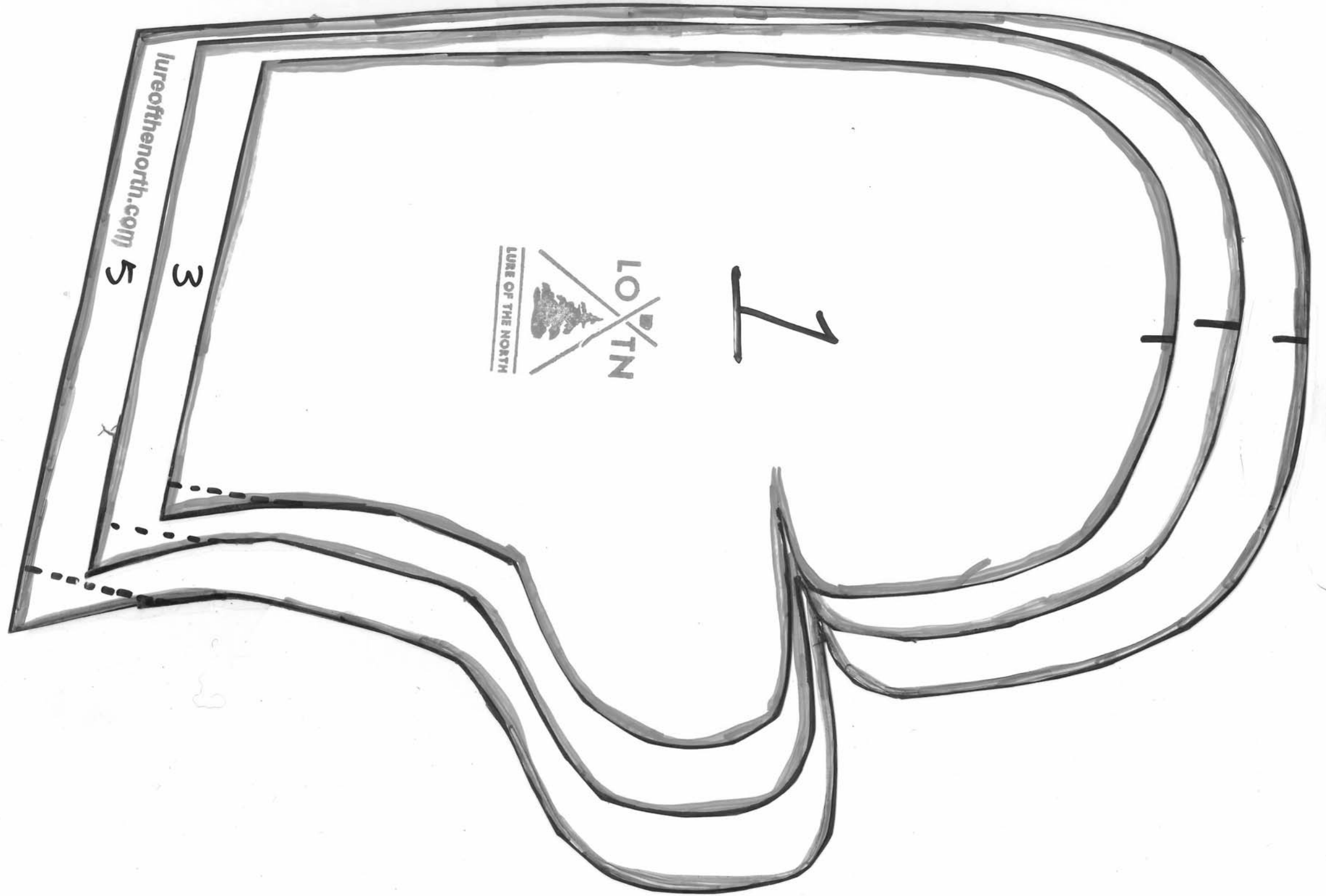
Lure of the North Mitten Pattern Package

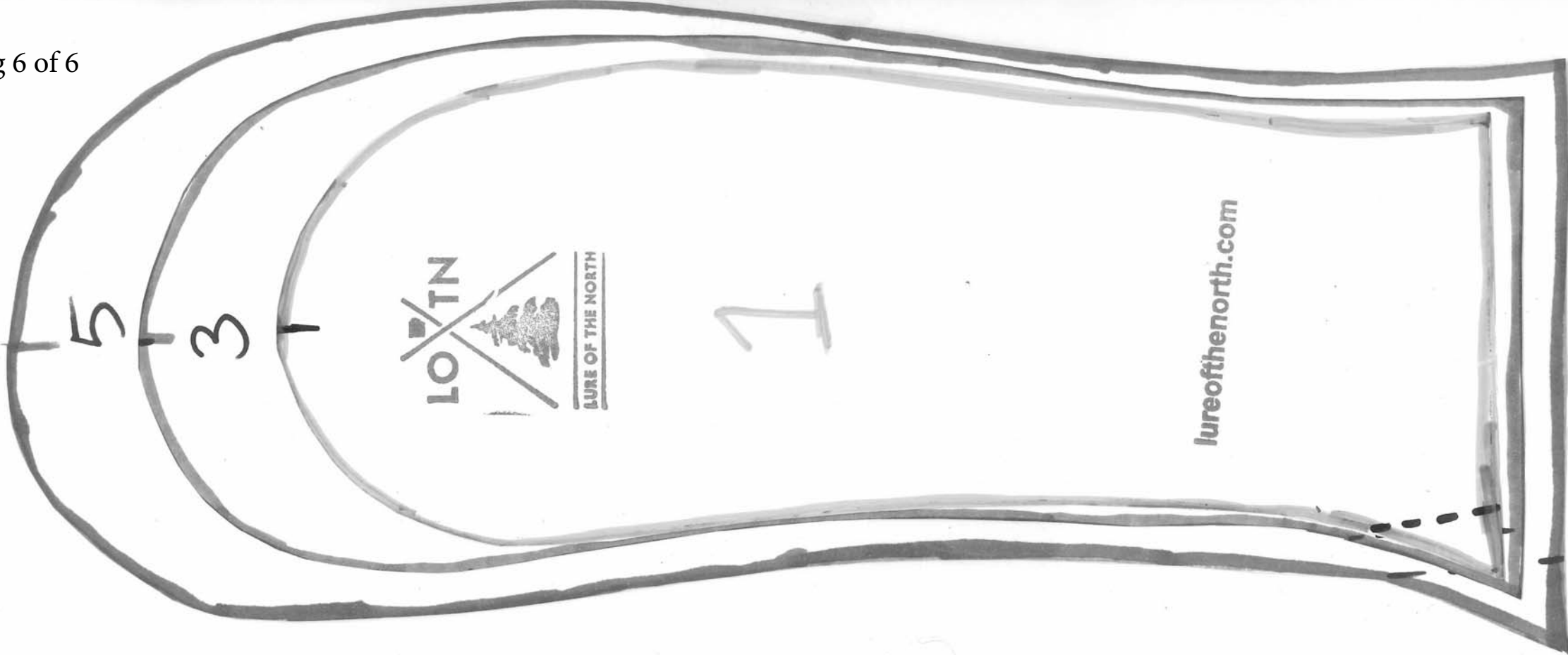
Version D
Updated Fall, 2019











lureofthenorth.com